

## Hydraulic Adapters - 37° JIC

### Flare Caps

**Specifications**

- Reference SAE 070112
- Pressure rating at 70°F (21°C)

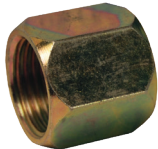


Female JIC 37° Flare	Tube O.D.	PSI	Zinc Plated Steel Part #
5/16"-24	1/8"	5000	0304C-2
7/16"-20	1/4"	5000	0304C-4
9/16"-18	3/8"	5000	0304C-6
3/4"-16	1/2"	4500	0304C-8
7/8"-14	5/8"	3500	0304C-10
1-1/16"-12	3/4"	3500	0304C-12
1-5/16"-12	1"	3000	0304C-16
1-5/8"-12	1-1/4"	2500	0304C-20
1-7/8"-12	1-1/2"	2000	0304C-24
2-1/2"-12	2"	1500	0304C-32

### Flare Tube Nuts

**Specifications**

- Reference SAE 070110
- Pressure rating at 70°F (21°C)



Female JIC 37° Flare	Tube O.D.	PSI	Zinc Plated Steel Part #
7/16"-20	1/4"	5000	0318-4
9/16"-18	3/8"	5000	0318-6
3/4"-16	1/2"	4500	0318-8
7/8"-14	5/8"	3500	0318-10
1-1/16"-12	3/4"	3500	0318-12
1-5/16"-12	1"	3000	0318-16

### Screw Thread Plugs

**Specifications**

- Reference SAE 070109
- Pressure rating at 70°F (21°C)



Male JIC 37° Flare	PSI	Zinc Plated Steel Part #
5/16"-24	5000	1254-02H
7/16"-20	5000	1254-04H
9/16"-18	5000	1254-06H
3/4"-16	4500	1254-08H
7/8"-14	3500	1254-10H
1-1/16"-12	3500	1254-12H
1-5/16"-12	3000	1254-16H
1-5/8"-12	2500	1254-20H

### Flare Tube Sleeves

**Specifications**

- Reference SAE 070115
- Pressure rating at 70°F (21°C)

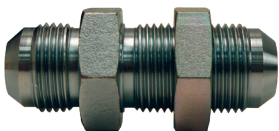


Female JIC 37° Flare	PSI	Zinc Plated Steel Part #
7/16"-20	5000	0319-4
9/16"-18	5000	0319-6
3/4"-16	4500	0319-8
7/8"-14	3500	0319-10
1-1/16"-12	3500	0319-12
1-5/16"-12	3000	0319-16

### Flare Bulkhead Unions with Lock Nut

**Specifications**

- Reference SAE 070601
- Pressure rating at 70°F (21°C)



Male JIC 37° Flare	PSI	Zinc Plated Steel Part #
7/16"-20	5000	2700LN-4
9/16"-18	5000	2700LN-6
3/4"-16	4500	2700LN-8
7/8"-14	3500	2700LN-10
1-1/16"-12	3500	2700LN-12
1-5/16"-12	3000	2700LN-16

K